

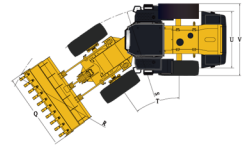
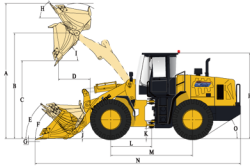
ZL50NC WHEEL LOADER

Efficiency Rules the Future



DIMENSIONS

All dimensions are approximate. Dimensions may vary with bucket and tire choice. Refer to operating specifications.



NO.	DESCRIPTION	UNIT	STD	H D
A	Overall Height – Bucket Raised	mm	5338	5635
B	Bucket Pin Height at Max. Lift	mm	4163	4520
C	Dump Clearance at Max. Lift (45°)	mm	3080	3435
D	Reach at Max. Lift and 45° Dump	mm	1252	1274
E	Rack Back Angle at Carry	°	48	46
F	Rack Back Angle at Ground	°	45	44
G	Digging Depth	mm	50	50
H	Rack Back Angle at Max. Lift	°	53	48
I	Dump Angle at Max. Lift	°	45	45
J	Carry Height	mm	400	400
K	Ground Clearance	mm	408	408
L	Center Line of Front Axle to Hitch	mm	1615	1615
M	Wheel Base	mm	3300	3300
N	Overall Length	mm	8220	8560
O	Departure Angle	°	28	28
P	Height to Top of Cab	mm	3380	3380
Q	Overall Width over Bucket	mm	3010	3010
R	Min. Turning Radius over Bucket	mm	7210	7450
S	Min. Turning Radius over Tires	mm	6665	6665
T	Steering Angle – Left/Right	°	35	35
U	Width at Tread Center	mm	2240	2240
V	Overall Width over Tires	mm	2835	2835

TECHNICAL PARAMETERS

BASIC	Bucket Capacity	3.0m ³	
	Rated Payload	5000kg	
	Operating Weight	17300(HD17700)±300kg	
	Traction Force	155±3kN	
	Breakout Force	170±3kN	
	L×W×H	8220(8560)×3010×3380mm	
ENGINE	Maker/Model	WEICHAI/WD10G220E21	
	Rated Power	162kW/2200rpm	
	Maximum Torque	860N·m/1400-1600rpm	
	Bore x Stroke (mm)	126×130mm	
	No. of Cylinders	6/9, 726L	
	/Displacement		
	Air Cleaner	Three Stage Air Cleaner	
	Alternator	70Amp	
	Battery	2-24V/120Ah	
	Starting Motor	24V/7.5kW	
DRIVE TRAIN	Transmission Type	Planetary Powershift	
	Shift Type	Mechanical Powershift Control	
	Pressure of Transmission	1.1-1.5MPa	
	Torque Converter Type	Single-stage, Duo-turbine, 4-element	
	Axles	Rigid (Front)&Oscillating (Rear)	
	Rear Axle Oscillation (°)	±10°	
	Differential	Conventional	
	Main Reducer	Spiral Bevel, 1-stage Reduction	
	Final Reducer	Planetary Reduction	
	Tire	23.5-25 L-3 16PR TT	
	Travel Speed-Forward	11.5/36 km/h	
	Travel Speed-Reverse	16 km/h	
	BRAKE SYSTEM	Service Brake	Gas Push Oil Caliper Brake
		Setting Pressure	0.70-0.78MPa
Parking Brake		Air Actuated Caliper Brake	
Emergency Brake		Air Actuated Caliper Brake	
STEERING SYSTEM	Type	Hydraulic Load Sensing System	
	Pump	176L/min 2200rpm	
	System Pressure	15MPa	
	Cylinder Type	Double Acting	
HYDRAULIC SYSTEM	Steering Angle	±35°	
	Type	Joystick Control (Single-lever)	
	Pump	220L/min 2200rpm	
	Control Valve	2 Spool	
SERVICE REFILL CAPACITY	System Pressure	16MPa	
	Cycle Time (Sec)	11	
	Fuel Tank (L)	285L	
	Hydraulic Tank (L)	270/275(3rd Spool)L	
	Crankshaft (L)	20L	

CONFIGURATION

WEICHAI Engine
LONGKING Transmission
Mechanical Powershift Control
LONGKING Axles (Dry type)
Joystick Working Control (Single-lever)
Air Actuated Caliper Brake
ROPS&FOPS Cabin
Mechanical Instrument Panel
Warm-air Machine

OPTIONAL

High Dump
Oil-bath Air Filter
Radial Tires
Limited Lifting Position
3rd Spool for Auxiliary Function
Sliding Cabin Window
Electric Heating Rear Window
Lockable Oil Tank Cap
Rear View Camera
Air Conditioner
Radio/MP3
Bucket(3 Piece Cutting Edges)
Rock Bucket(3.0m ³)
Enlarged Bucket(3.5m ³)
Coal Bucket(4.2m ³)
Log Grapple
Grass Grapple
Side Tip Bucket
Marble Fork
Log Fork
Quick Hitch Coupler
Quick Hitch Bucket
4in1 Bucket(Quick Hitch Only)
Snow Blade(Quick Hitch Only)

For more information on Longking products,
Please contact our local agent:

The following blank can be used for notes or comments.

LONGKING (FUJIAN) INTERNATIONAL TRADE CO., LTD.
LONGKING HOLDINGS LIMITED

Add: 26 Minyi Road, Xinqiao, Songjiang Industrial Zone, Shanghai

Tel: +86-21-3760 2242

E-mail: export@lonking.cn

http://www.lonkinggroup.com

- RATED POWER: 162kW/2200rpm
- BUCKET CAPACITY: 3m³
- RATED PAYLOAD: 5000kg
- OPERATING WEIGHT: 17300(17700)kg